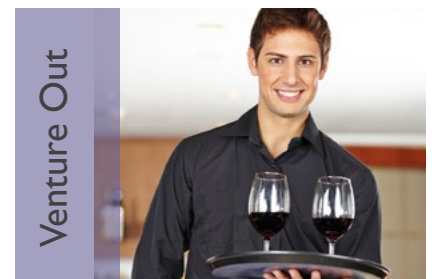




Alpha Canberra Hotel & Apartments

Nestled in the Tuggeranong valley against the backdrop of the beautiful Brindabella Ranges, Alpha Canberra Hotel & Apartments specialises in accommodation for people travelling as part of Car Club events. Here are just some of the reasons why your car club will be delighted to make Alpha Hotel Canberra their base when travelling through, or to Canberra;

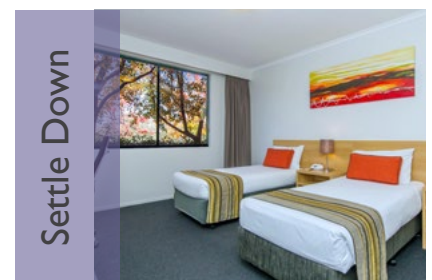
- Plenty of easily accessible off-street parking
- 100 rooms & apartments – with various bedding configurations including twin and large multi-share rooms
- Rooms are designed with easy-access and walk-in showers
- Variety of catering options including onsite dinners and breakfasts or Bistro dining at the Tuggeranong Vikings or Southern Cross Clubs next door
- Function rooms for private events
- Free unlimited WiFi, gym and sauna
- Just 20 mins from all major Canberra attractions
- A warm and friendly meet-and-greet on arrival by the resident kangaroos



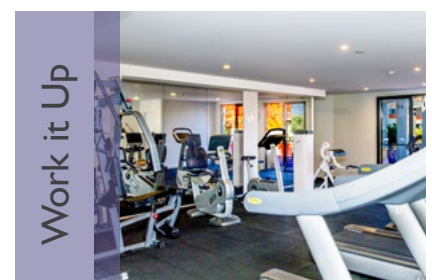
Venture Out



Eat In



Settle Down



Work it Up

Special rates for groups
Plus receive \$200 bar credit when you book 20 or more rooms (Fri-Sun only).
 Mention this flyer when you book.



Suggested Driving Routes

Only three and a half hours from Sydney and eight hours from Melbourne, Canberra is the perfect place for your Car Club to break their drive up, or to base themselves while they explore the surrounding region. Canberra is also an easy drive to Eurobodalla Coast and the majestic Snowy Mountains.



From Sydney: 3.5 hours

- Take the Princes Highway coastal route into Batemans Bay and connect up with the Kings Highway heading towards Canberra by passing through the historic towns of Bungendore and Braidwood.
- Get on the F5 Freeway and take the Mittagong exit to follow the Old Hume Highway throughout the country towns of Moss Vale, Mittagong, Sutton Forest, and Bowral. Get back onto the F5 Freeway and continue towards Canberra and Goulburn.



From Melbourne: 8 hours

- Follow coastal road Princes Highway through Bairnsdale, Genoa, Batemans Bay, and Eden and then turn onto Kings Highway and head towards Canberra via stops in the historic towns of Bungendore and Braidwood.
- Head inland and drive through Echuca, Bendigo, and Albury-Wodonga and then travel directly towards Canberra. If you have more time, take a detour across the Snowy Mountains and visit the townships of Tumut, Cooma, Jindabyne and Thredbo.

46 Rowland Rees Crescent, Greenway ACT 2900
T: 02 6293 3666 E: res.tug@alphahotels.com.au
www.alphahotelcanberra.com.au

 **Alpha Canberra**
Hotel & Apartments